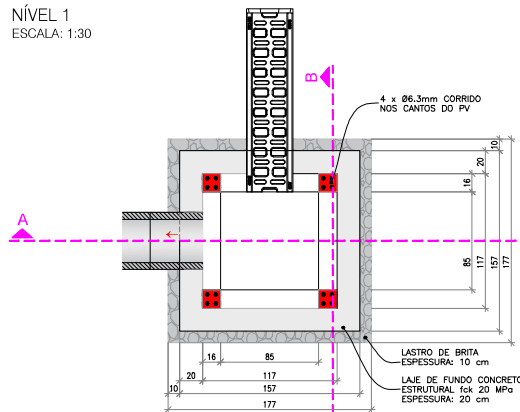


# PLANTA DO CP - TIPO 01

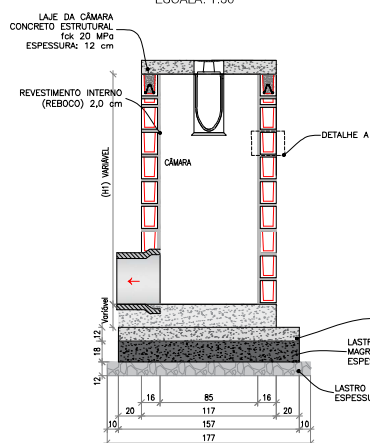
NÍVEL 1

ESCALA: 1:30



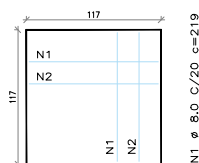
## CORTE A-A

ESCALA: 1:30



## DETALHAMENTO DA LAJE

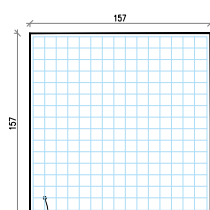
LAJE DA CÂMARA - CP TIPO 01  
(117 x 117 x 12)  
Peso: 0,41 t



12 N1 Ø 8.0 C/20 c=112

7 N1 Ø 8.0 C/20 c=219  
12 N2 Ø 12.5 C/20 c=126

LAJE DE FUNDO - CP TIPO 01  
(157 x 157 x 20)  
Peso: 1,23 t



TELA SOLDADA NERVURADA  
2 x Ø-283 DIÂMETRO  
(LONG. 6,0mm x TRANS. 6,0mm)  
# 10x10cm

# PLANTA DO CP - TIPO 01

VISTA SUPERIOR

ESCALA: 1:30

